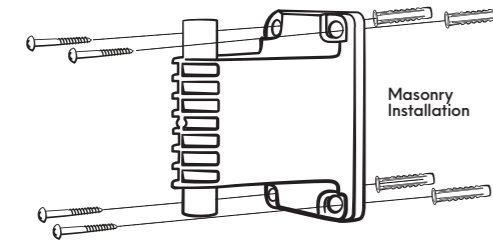


INSTALLATION

Bracket into Masonry

- 1 Use the bracket as a template to mark all four holes with a pencil, using a spirit level to ensure it is straight.
- 2 Drill holes 50mm deep using a 10mm masonry drill bit.
TIP: Use sticky tape around the drill bit to mark 50mm depth. Be sure to set the drill to the 'Hammer' setting.
- 3 Hammer the plugs into each hole.
- 4 Set the bracket in place, then use the supplied 200mm Phillips Head drill bit to loosely screw in each screw.
- 5 Once all are in place, tighten each screw.

.....
For specific instructions on all surface types, visit the Product Support page at hoselink.com.au.

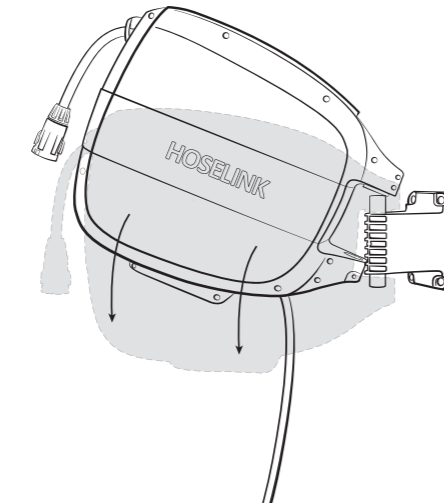


Bracket into Timber

- 1 Use the bracket as a template to mark all four holes with a pencil, using a spirit level to ensure it is straight.
- 2 Drill four holes 50mm deep using a 5mm drill bit.
TIP: Use sticky tape around the drill bit to mark 50mm depth.
- 3 Set the bracket in place, then use the supplied 200mm Phillips Head drill bit to loosely screw in each screw (plugs not required).
- 4 Once all are in place, tighten each screw.

COMPLETE SETUP

Place Hose Reel onto the Bracket



TIP

Tilt the reel at an angle over the top post first to attach, then level the reel to slide it onto the bottom post. Do this in reverse to remove it.

Attach Stopper Ball

Complete this step without water pressure in the hose.

- 1 Pull the hose out about half a metre and lock the length.
- 2 Open the stopper ball lever from the side closest to the 'K'.
- 3 Put the stopper ball approximately 20cm behind the connector. Push with your palm from the 'H' side to latch the lever.

TIP

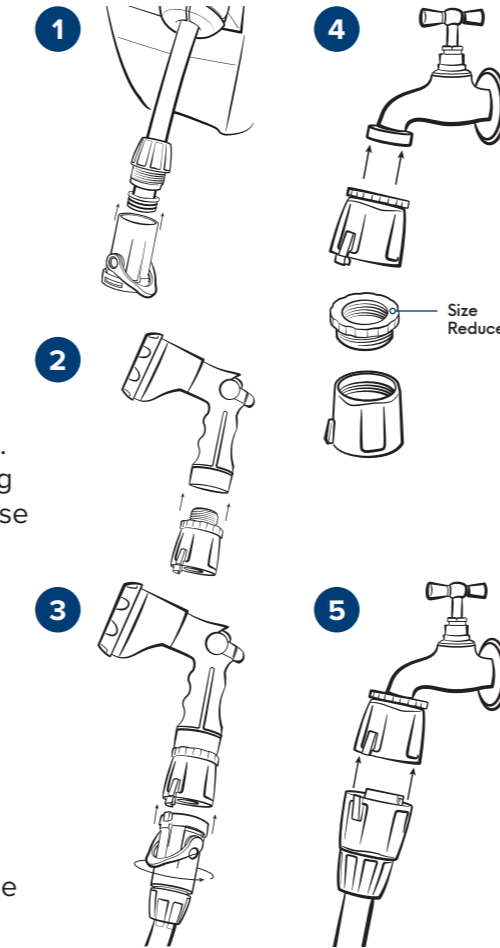
If this is too difficult, extend the hose to the ground. Put your foot on the 'H' side and roll the ball forward to latch the lever.



COMPLETE SETUP

Connector and Sprayer Assembly

- 1 Push the Hose Connector with Flow Control Body onto the end of the main hose. Secure by tightly screwing in the pre-attached nut.
- 2 Screw the Accessory Connector with Swivel into the Sprayer.
- 3 Attach the sprayer to the main hose. To join Hoselink fittings, hold a fitting in each hand, line up the lugs and use a point and twist motion to connect.
- 4 Screw the Universal Tap Connector onto your outdoor tap. If the connector appears too small, unscrew the size reducer and screw the main connector body onto the tap.
- 5 Connect the 2m Leader Hose onto the Universal Tap Connector with the same point and twist action.



READY TO USE

Using the Hose Reel

- 1 To use the hose, simply pull it out to the desired length. The hose will retract slightly and lock at that length.
- 2 To commence retraction, gently pull the hose to unlock, then allow it to retract automatically as you walk it back in.
- 3 Always fully retract the hose after use.

Troubleshooting

Visit the Product Support section on our website or scan the QR code for more information.



Specifications

Model	Hose Length	Weight	Weight with water	Max working pressure
E10020B E10020C	20m Internal Hose + 2m Leader Hose	12.35kg	13.85kg	150psi
E10030B E10030C	30m Internal Hose + 2m Leader Hose	14.80kg	17.90kg	150psi

INSTRUCTION MANUAL

Evolve

Retractable Hose Reel



Congratulations

on purchasing Hoselink's latest innovation, the Evolve Retractable Hose Reel!

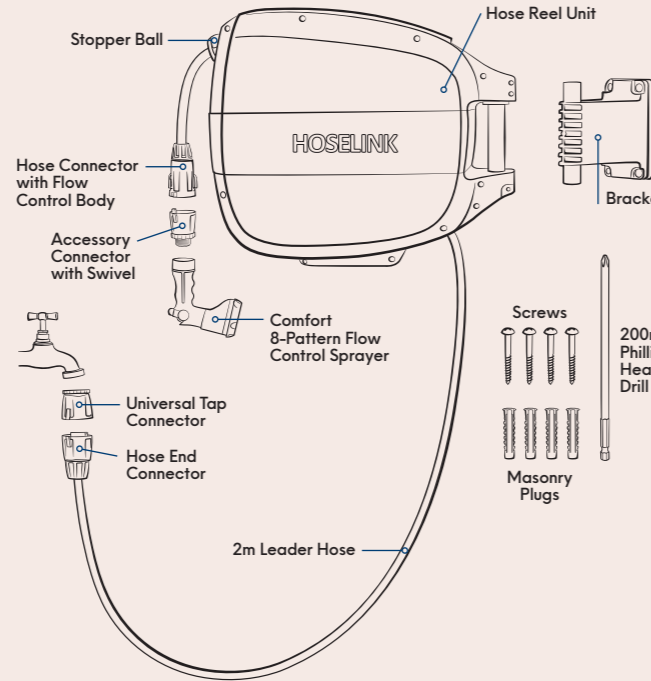
We take pride in our commitment to bring manufacturing to Australia, and we're thrilled to share that we craft this retractable hose reel unit in the heart of Sydney, sourcing select components internationally, such as the hose and sprayer.

Designed with a modern, sleek look to complement your home, this hose reel has been engineered with durability in mind, ensuring years of reliable service. Plus, many components, including the hose itself, are now replaceable for your peace of mind.

We hope you enjoy using your new Evolve Hose Reel to help your garden flourish!



BOX CONTENTS



1 x Hose Reel with 2m Leader Hose

1 x Wall Bracket

1 x Stopper Ball

1 x Comfort 8-Pattern Flow Control Sprayer

1 x Universal Tap Connector

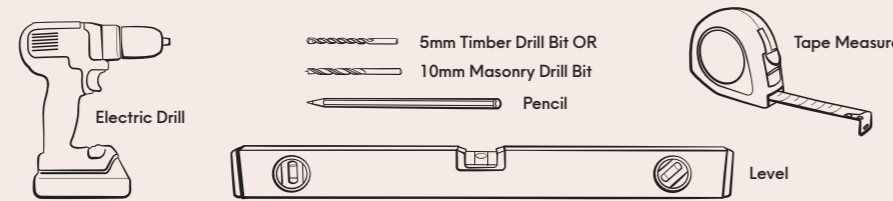
1 x Accessory Connector with Swivel

1 x Hose Connector with Flow Control Body

1 x Mounting Hardware (4 x Screws, 4 x Masonry Plugs)

1 x 200mm Phillips Head Drill Bit

Tools required



CAUTION

Read this manual before installation and use.

- The hose reel is not intended for commercial use, as a drinking water source or with hot water.
- Do not allow children to use or play with the hose reel.
- **Do not unscrew the hose reel case.** It contains a tensioned spring that is dangerous if released.
- The hose reel must be mounted on the supplied wall bracket or Hoselink's Mounting Post before use.
- Turn off the water at the tap and release pressure from the spray end when the reel will not be in use for prolonged periods.
- Do not let the hose retract unassisted, always walk the hose back into the reel.
- During winter, in frost-prone areas, release water pressure from the spray end, disconnect from the water source and store the hose reel inside.
- Do not use harsh chemicals to clean the hose reel or hose.
- Do not submerge hose reel in water.

Warranty

Hoselink warrants that this product will be free from defects in workmanship and materials that result in failure during normal usage, from the date of purchase as follows: 5 years on the Hose Reel unit including the hose, 2 years on the Hose Connectors and Comfort 8-Pattern Flow Control Sprayer. The warranty does not cover misuse, unauthorised modifications, general wear and tear, or external causes such as acts of nature.

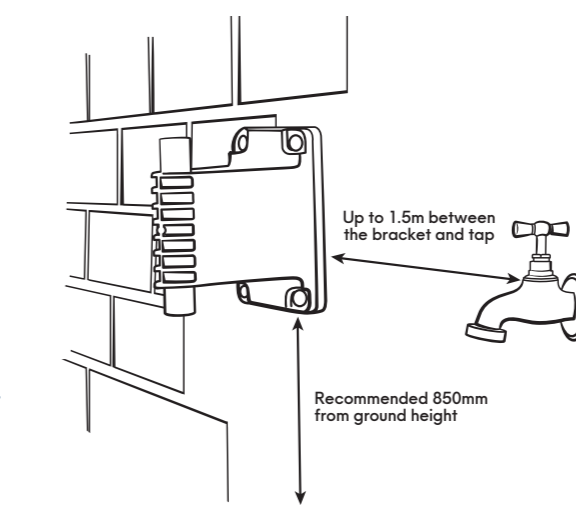
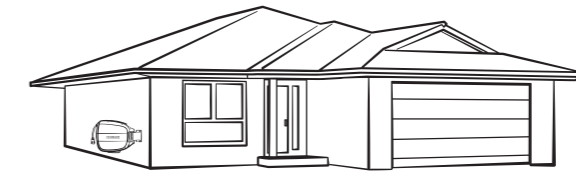
For all warranty claims, please contact our Customer Care Team in the first instance. A photo or video may be requested to assist with assessing your claim. If a Hoselink product is defective, we will provide a repair or offer you a replacement or refund.

Our goods come with guarantees that cannot be excluded under the Australian Consumer Law. You are entitled to a replacement or refund for a major failure and compensation for any other reasonably foreseeable loss or damage. You are also entitled to have the goods repaired or replaced if the goods fail to be of acceptable quality and the failure does not amount to a major failure.

INSTALLATION

Choose a Suitable Location

The bracket must be mounted to a solid surface, such as brick or timber, to support the reel's weight during use. A shaded position, if possible, is recommended to prolong the life of the product. For optimal performance of the hose reel, install the bracket at least 1m away from the corner of a building.

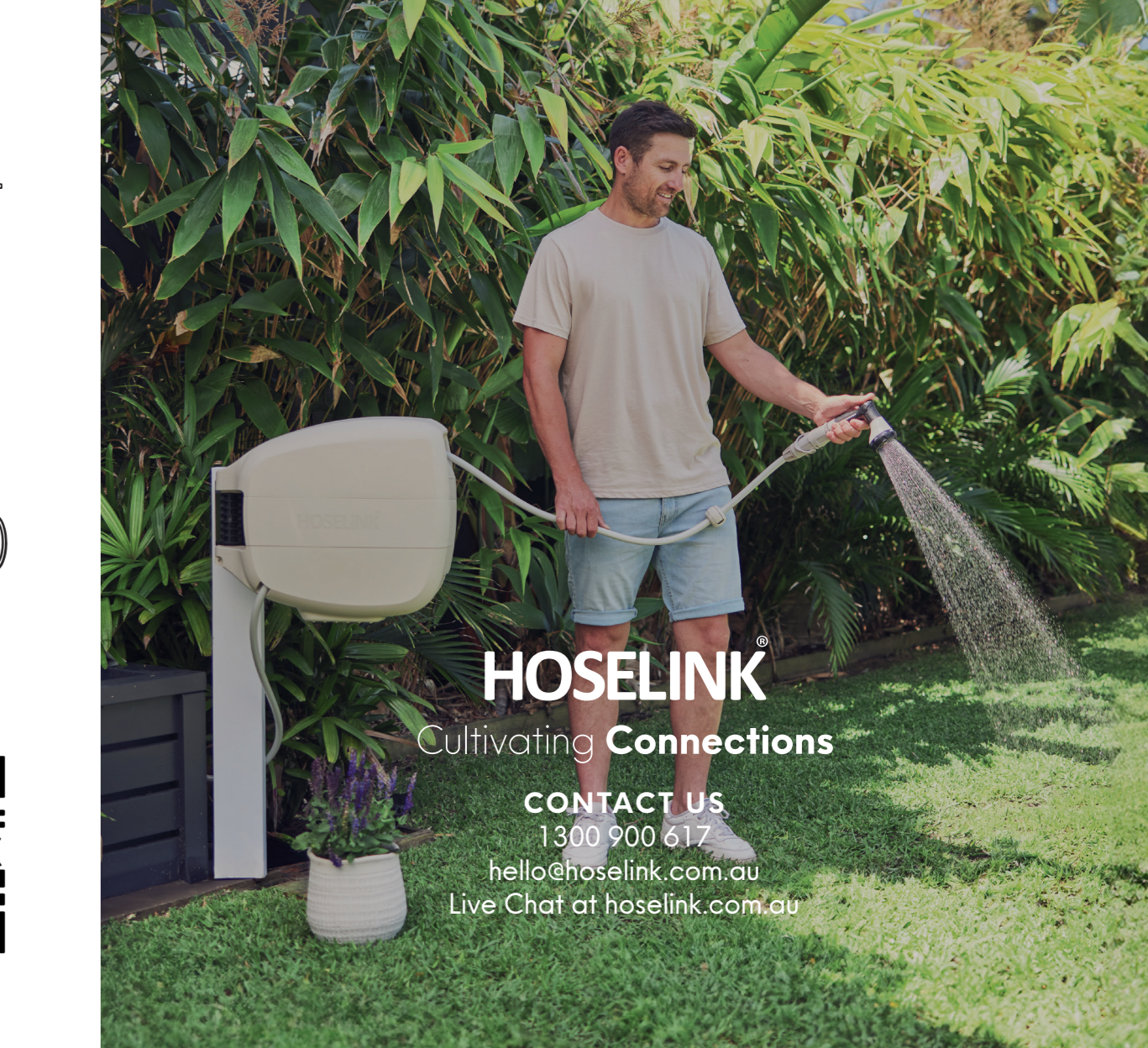


TIP

If you have an existing Hoselink Classic Retractable Reel installed, you can use the same screw holes for mounting the Evolve Hose Reel bracket. Please note that the existing screw holes and plugs can be used, but we recommend using the supplied Evolve hardware for mounting the new bracket to ensure stability.

Installation

See reverse side for installation instructions or scan the QR code to watch an installation video.



HOSELINK
Cultivating Connections

CONTACT US
1300 900 617
hello@hoselink.com.au
Live Chat at [hoselink.com.au](https://www.hoselink.com.au)