



MODEL: EA4020 / EA4030  
Replacement Main Hose  
for Hose Reel | Evolve Series

For more information visit

[hoselink.com.au](https://hoselink.com.au)

or call

1300 900 617

Cultivating **Connections**

 [youtube.com/hoselink](https://youtube.com/hoselink)



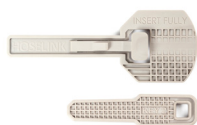
User Manual  
MODEL: EA4020 / EA4030  
Replacement Main Hose  
for Hose Reel | Evolve Series

**HOSELINK**<sup>®</sup>

## HOSELINK<sup>®</sup>

### Kit Contents

- 1 x Replacement 20m  
or 30m Evolve Hose
- 1 x Safety Key 1
- 1 x Safety Key 2



### What you will need

- 1 x Pair of Pliers

**⚠ WARNING:** The two Safety Keys must be fully inserted before you start working on the hose as they stop the drum from retracting. The retracting drum can cause severe bodily harm to fingers and hands. To avoid injury, **NEVER attempt to work on replacing the hose without fully inserting both Safety Keys!**



Video Demonstration  
Scan the QR code  
for more information.

### To Replace the Hose

**STEP 1 Remove the Flow Control and Stopper Ball**  
These will be re-used on the new hose.

- 1.1 Remove the flow control by unscrewing the nut and pulling off the hose.



- 1.2 Remove the stopper ball by opening the lever.



**STEP 2 Remove the front Fascia & fully Pull Out the Hose**

- 2.1 Remove the fascia by pulling down in the centre.



- 2.2 Once the fascia is removed, pull out the hose to its full length.



Continued over

## STEP 3 Inserting the Safety Keys

Both the case and keys are numbered, indicating the correct position of each key.

- 3.1 Remove the left side panel.



- 3.2 Pull the hose out slightly to align the drum and insert 'Key 1'.



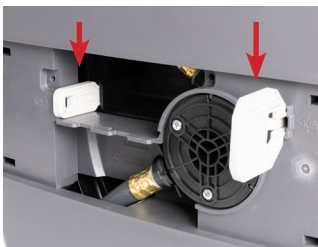
- 3.3 Remove the **Safety Cover** by pulling down slightly on the lip and pulling out the cover.



- 3.4 Pull the hose slightly and insert 'Key 2'.



**⚠ WARNING:**  
Make sure both reds are fully inserted before working on the hose.

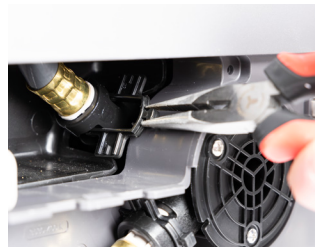


## STEP 4 Disengaging the main hose

- 4.1 First remove the quick-connect hose clip. To do this, use pliers to reach inside the drum and push the hose all the way into the connector. This will loosen the quick-connect clip.



- 4.2 Using the pliers, remove the quick-connect clip.



- 4.3 Remove hose from connector.



- 4.4 Now pull the damaged hose out through the front of the reel.



## STEP 5 Connecting the new hose

- 5.1 Replace the quick-connect clip.



- 5.2 Feed the new hose through the PLS carriage and down the groove in the drum.



- 5.3 Once in place, use pliers to bend the hose into the connector, pushing it all the way in. This will pop the quick-connect clip out slightly.



- 5.4 Push the quick-connect clip back into place.



## STEP 6 Retracting the Hose

- 6.1 While holding the hose, remove 'Key 2' and replace the Safety Cover. It should click back into place.



- 6.2 While still holding the hose remove 'Key 1'.



- 6.3 Begin retracting the new hose into the reel. Stop retracting with about 50cm of hose out of the reel.



## STEP 7 Re-attaching Parts

- 7.1 Re-attach the fascia by lining up the top and then clicking in the base.



- 7.2 Re-fit the Flow Control by pushing onto the end of the hose and tightening the nut.



- 7.3 Re-attach Stopper Ball by placing over the hose and closing the lever. To do so, push on the 'H' in the Hoselink logo with your palm.



- 7.4 Finally re-attach the side cover by pushing back into place.

